



vwd data analytics XL Installation instructions for Citrix

Version 4.3.0.6
24/02/2020

Inhaltsverzeichnis

1. System Requirements	3
1.1. Hardware.....	3
1.2. Software	3
1.2.1. Operating System.....	3
1.2.2. Microsoft .Net Framework.....	3
1.2.3. Microsoft Excel.....	3
1.3. Hard drive space.....	3
1.4. Internet connection	3
1.4.1. Firewall.....	4
1.4.2. Proxy-Server.....	5
1.5. Storage locations	5
2. Installation / Uninstallation / Update	5
2.1. Installation	5
2.2. Uninstallation	9
2.3. Actualising/Updating.....	10
3. Configuration scenarios	10
3.1. Leased line	10
3.1.1. BaseUrlList.xml.....	11
3.1.2. MSApiCustom.xml.....	11
4. How to activate <i>vwd data analytics XL</i> for users.....	12
4.1. Using GPOs.....	12
4.2. Alternative way without GPOs	12
5. Contact.....	13

1. System Requirements

1.1. Hardware

Processor:	2,0 GHz dual core processor or faster
RAM:	512 MB available RAM
Hard disk:	1 GB available hard disk storage space (see 'Hard disk storage space')
Monitor:	resolution of 1.280x1.024 pixels

1.2. Software

1.2.1. Operating System

vwd data analytics XL runs with the following operating systems (32bit, 64bit):

- Windows Server 2008 R2 SP1
- Windows Server 2012 R2 SP1
- Windows Server 2016 SP1

The latest service packs are required. The application runs in 32bit mode.

1.2.2. Microsoft .Net Framework

Running *vwd data analytics XL* requires Microsoft .Net Frameworks 4.5 or higher. If it is not already installed on the computer, it must be added manually prior to installation. Generally, administrator privileges are required for installation. The installation of up-to-date service packs is recommended.

1.2.3. Microsoft Excel

vwd data analytics XL runs with the following versions of Excel (32bit/64bit):

- Microsoft Excel 2007
- Microsoft Excel 2010
- Microsoft Excel 2013
- Microsoft Excel 2016 (365)
- Microsoft Excel 2019 (365)

The latest service packs are required.

1.3. Hard drive space

For installing *vwd data analytics XL* a space of about 100 MB is required for the application and about 850 MB for the Microsoft .Net framework 4.5 (if not installed already).

From the 100 MB of the application about 18 MB are used for application and configuration data for all users. The rest of about 80 MB are used from files in the installation folder.

Log and configuration files of the application are created in the profile folder of each user using *vwd data analytics XL*. The size of these files can be up to 30 MB.

1.4. Internet connection

A network connection to the vwd data centers is required.



1.4.1. Firewall

All firewalls between vwd market manager clients and vwd data centers are required to allow TCP communication on ports 80 and 443 with all the addresses listed below. Please note that port 443 may be used for none SSL communication.

For customers located in Europe (**without Italy**):

vp00.vwd.de
vp01.vwd.de
prospectus.vwd.com
<https://solutions.vwdservices.com>
<https://permsys.vwd.com> (current IPs are 128.127.8.95 and 213.61.9.109)
<https://mdd.vwd.com> (current IP is 128.127.8.92)

inet1-msc01.vwd.com -> 128.127.9.65
inet1-msc02.vwd.com -> 128.127.9.84
inet1-msc03.vwd.com -> 128.127.9.87
inet1-msc04.vwd.com -> 128.127.9.88
inet1-msc05.vwd.com -> 128.127.9.89
inet1-msc06.vwd.com -> 128.127.9.71
inet1-msc07.vwd.com -> 128.127.9.91
inet1-msc08.vwd.com -> 128.127.9.72
inet1-msc09.vwd.com -> 128.127.9.73
inet1-msc10.vwd.com -> 128.127.9.66
inet2-msc01.vwd.com -> 128.127.8.18
inet2-msc02.vwd.com -> 128.127.8.19
inet2-msc03.vwd.com -> 128.127.8.20
inet2-msc04.vwd.com -> 128.127.8.21
inet2-msc05.vwd.com -> 128.127.8.22
inet2-msc06.vwd.com -> 128.127.8.23
inet2-msc07.vwd.com -> 128.127.8.24
inet2-msc08.vwd.com -> 128.127.8.25
inet2-msc09.vwd.com -> 128.127.8.26
inet2-msc10.vwd.com -> 128.127.8.27

For customers located in **Italy**:

red1.vwd-italia.com
red2.vwd-italia.com
prospectus.vwd.com
<https://solutions.vwdservices.com>
<https://permsys.vwd.com> (current IPs are 128.127.8.95 and 213.61.9.109)
<https://mdd.vwd.com> (current IPs are 213.61.9.82 and 128.127.8.92)

213.215.151.128 to 213.215.151.191
81.29.208.128 to 81.29.208.191



Note:

On port 443 runs a vwd own streaming protocol, which is not a real SSL-protocol.

1.4.2. Proxy-Server

All proxy servers involved in the communication between vwd market manager clients and vwd data centers are required to support HTTP 1.1 (GET and POST).

1.5. Storage locations

The setup stores the necessary data at three locations:

1. Program files:
C:\Program Files(x86)\vwd group\vwd data analytics XL\
2. User-specific files (AppData folder):
C:\Users\UserName\AppData\Roaming\vwd group\vwd data analytics XL\
3. Files for all users:
C:\ProgramData\vwd group\vwd data analytics XL\

Note:

All paths mentioned may be named differently depending on language and version of the operating system.

2. Installation / Uninstallation / Update

2.1. Installation

Please close any open Microsoft Office applications and be sure to uninstall any older versions of vwd data analytics X. If you have installed vwd data core, make sure to uninstall this program, too.

Note:

Administrator privileges are required for installation. Installation with administrator privileges is performed as a multiuser installation for other users.

Please start with the installation of Microsoft .Net Framework 4.5 if you have not installed it yet. Microsoft .Net Framework can be downloaded from:

<http://www.microsoft.com/de-de/download/details.aspx?id=30653>

After the installation first execute Windows Update for the most recent patches und service packs.

Then start the vwd data analytics XL.exe as administrator to install.

Please confirm the appearing user account control dialog with Yes. Afterwards the installshield wizard will be executed.

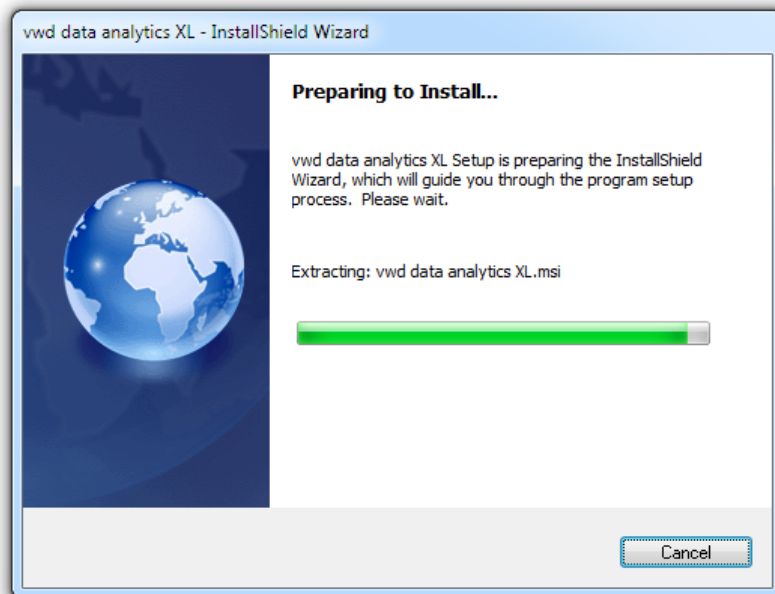


Fig. 1 Preparing installation

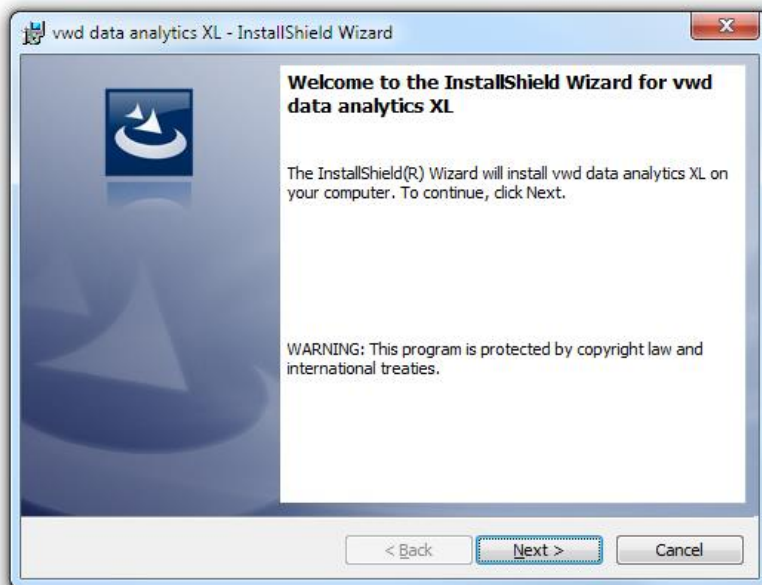


Fig. 2 Welcome dialog of the installation

Click *Next*.

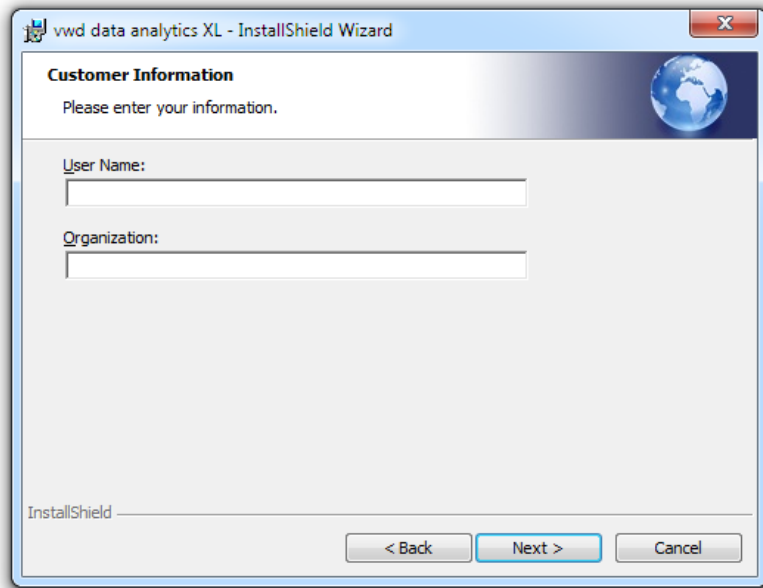


Fig. 3 Enter User data

Please enter name and corporation and click Next.

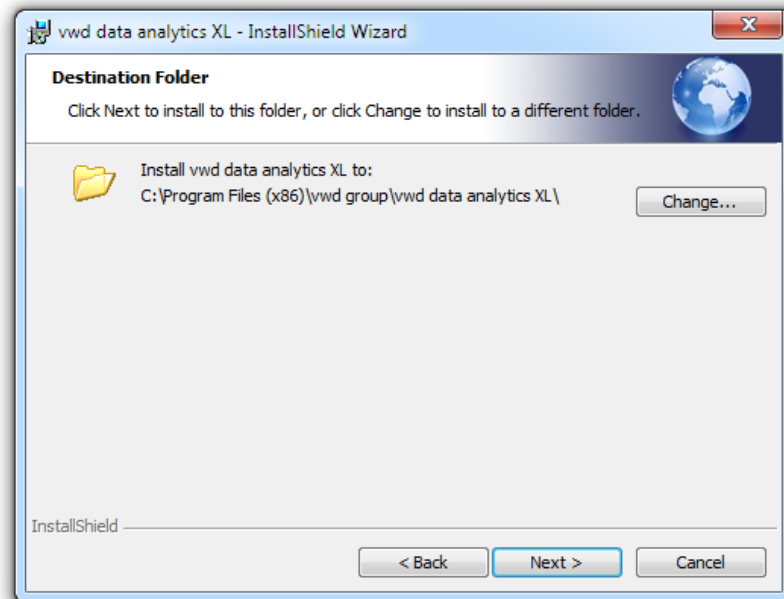


Fig. 4 Select installations folder

Click Next.

Please confirm the following dialogue with Install. The installation will start. The installation process may take several minutes.

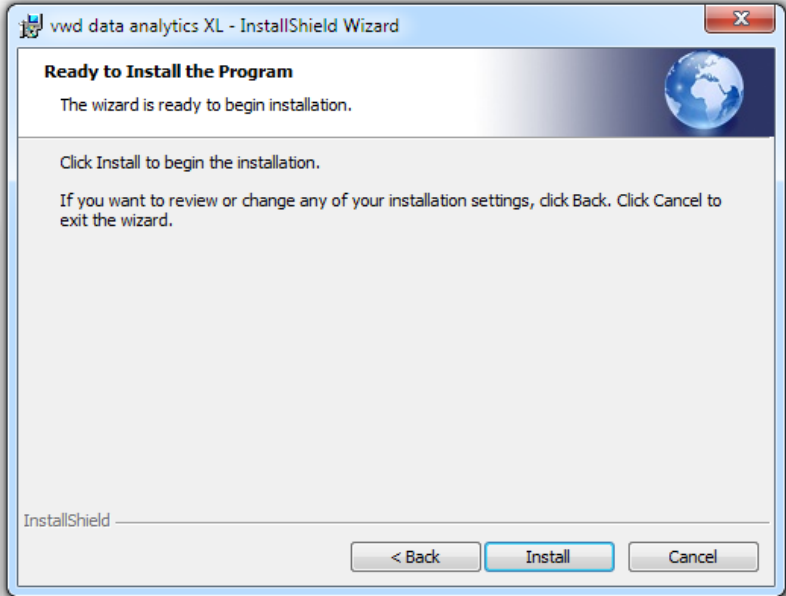


Fig. 5 Ready for installation

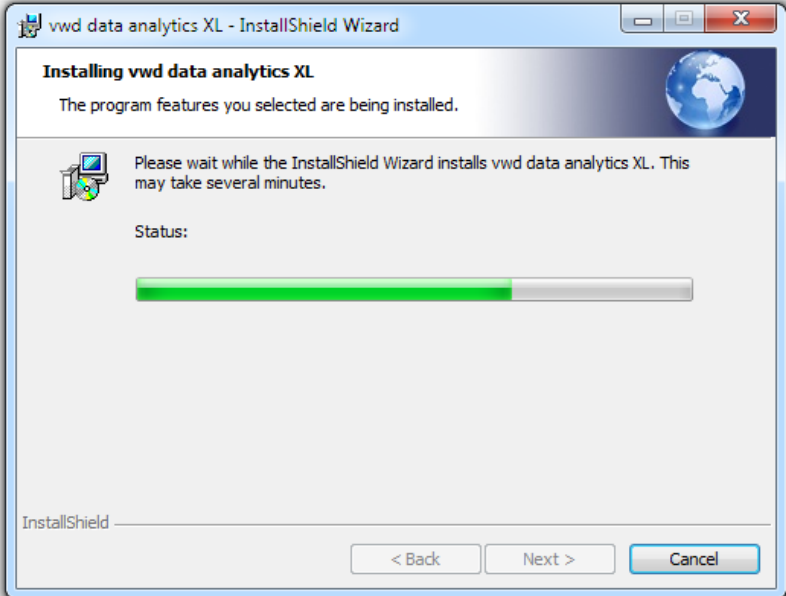


Fig. 6 Installation progress

When the installation is completed the following dialogue will appear. Click Finish to finalise the installation.

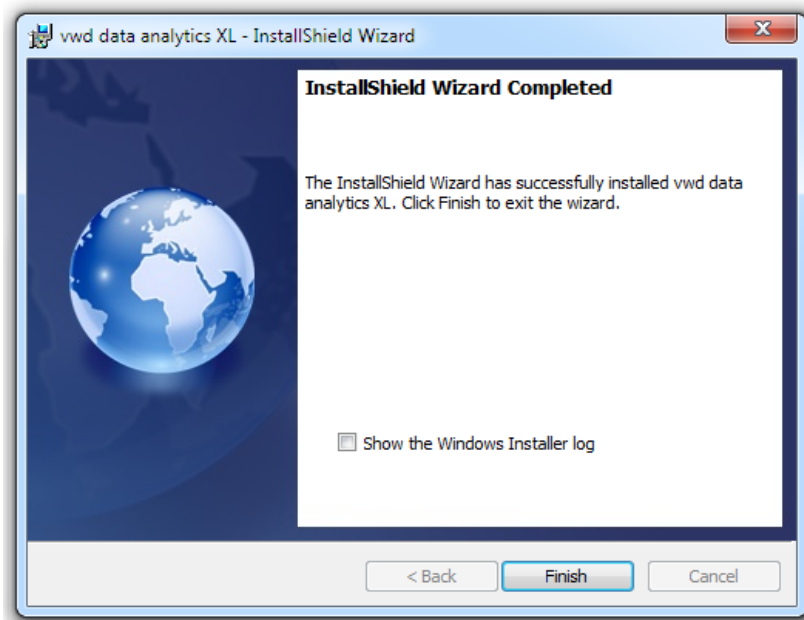


Fig. 7 Installation completed

Now the general installation for all users of the computer is completed. The final step is to activate the addin for permissioned users.

2.2. Uninstallation

If you want to uninstall *vwd data analytics XL* please go to the Windows system functions. To this end select *Programs* → *Programs and features in Control Panel*.

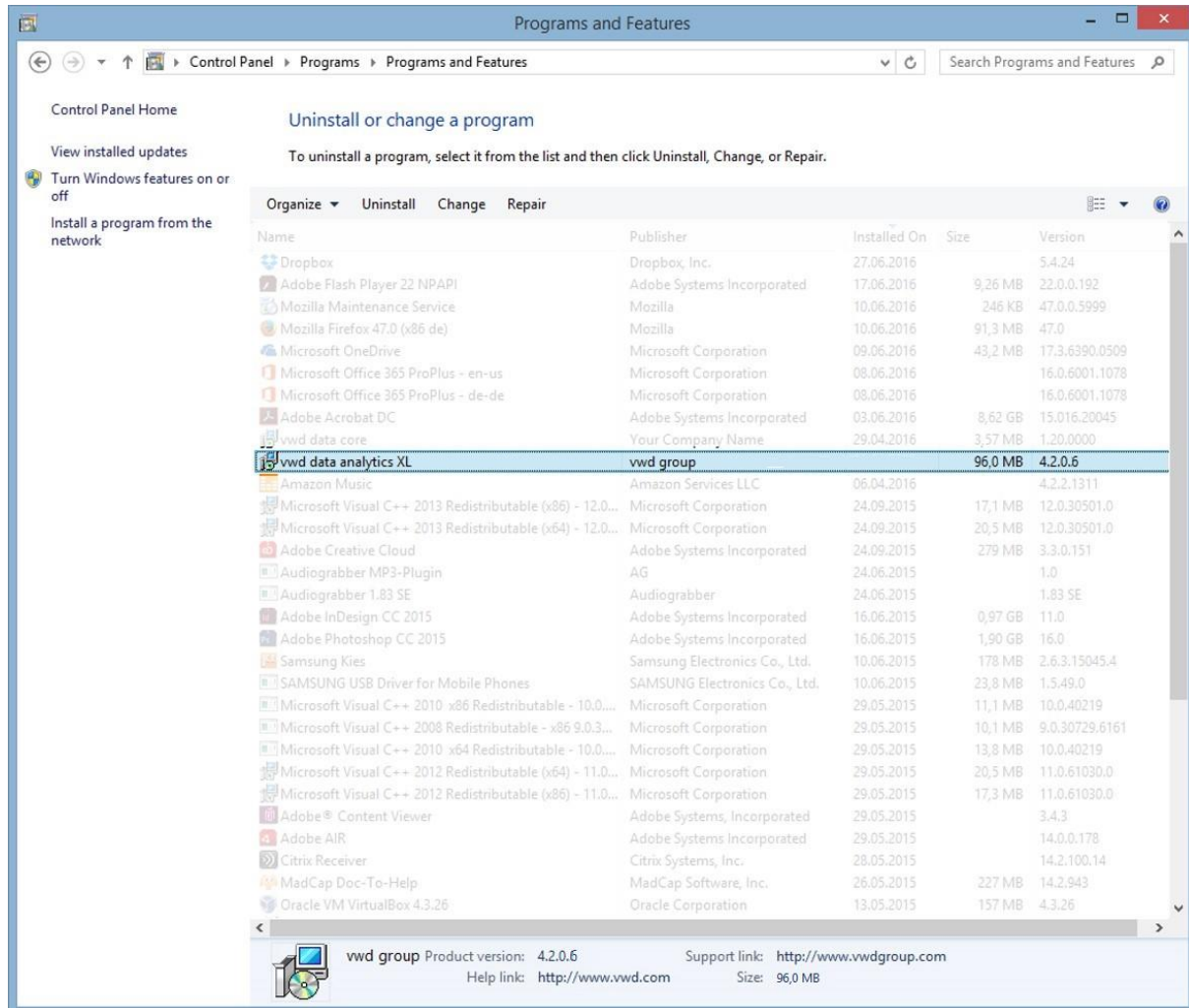


Abb. 8 Deinstallation

Select *vwd data analytics XL* and then click the *Uninstall* button.

2.3. Actualising/Updating

As of version 4.3.0.0, uninstalling is no longer necessary. Just run the new setup of *vwd data analytics XL* and follow the instructions.

3. Configuration scenarios

This chapter describes several scenarios how to connect with *vwd*, and configuration models involved. Some of the variant may complement one another.

3.1. Leased line

Customizations required to connect *vwd* market manager clients to the *vwd* data centers using a leased line are described here.



Please contact vwd for the IP addresses. The IP addresses are individual and have to be coordinated and enabled (firewall / routing).

You must ensure, that in your network the following names are resolved to IP addresses:

For customers located in **Europe** (without Italy):

- vp00.vwd.de
- vp01.vwd.de

For customers located in **Italy**:

- red1.vwd-italia.com
- red2.vwd-italia.com

Additionally, the following names have to be resolved for customers in **Europe** and **Italy**:

- prospectus.vwd.com
- solutions.vwdservices.com
- permsys.vwd.com
- mdd.vwd.com

This can be done with a DNS server in your network or a local host file on each machine.

3.1.1. BaseUrlList.xml

All URL fragments highlighted below must be replaced with the IP addresses of the leased line endpoints.

For customers located in Europe (**without Italy**):

```
<?xml version="1.0" encoding="utf-8" ?>
<WebResources>
  <BaseUrl ID="1" Url="http://vp00.vwd.de/V3/" />
  <BaseUrl ID="2" Url="http://vp01.vwd.de/V3/" />
</WebResources>
```

For customers located in **Italy**:

```
<?xml version="1.0" encoding="utf-8" ?>
<WebResources>
  <BaseUrl ID="1" Url="http://red1.vwd-italia.com/V3/" />
  <BaseUrl ID="2" Url="http://red2.vwd-italia.com/V3/" />
</WebResources>
```

3.1.2. MSApiCustom.xml

Make sure that a file named MSApiCustom.xml exists in the ProgramData \ vwd group \ vwd data analytics XL folder. If not, copy the MSApi.xml file and rename it MSApiCustom.xml.

All URL fragments marked below must be exchanged with the IP addresses of the dedicated line endpoints:

```
<URLs>
  <URL name="vwdPermissionsUser">
    <Primary>https://permsys.vwd.com/vwdPermissions.asmx/Ent_ByVwdId?AppID=23&amp;vwdID={0}
  </Primary>
</URL>
  <URL name="vwdTerminalConfig">
    <Primary>https://permsys.vwd.com/vwdPermissions.asmx/TerminalParameter_ByVwdId?AppID=23
&amp;vwdID={0}</Primary>
  </URL>
</URLs>
```

4. How to activate *vwd data analytics XL* for users

vwd data analytics XL **needs** to be activated / deactivated for users that are permissioned / not permissioned for use. There are two ways to active / deactivate the addin, one using GPOs, the other one without using GPOs.

4.1. Using GPOs

To provide *vwd data analytics XL* for users, the following steps **need** to be done:

1. Two GPOs need to be created:
 - a. one group containing users that are permissioned for the use of *vwd data analytics XL*
 - b. one group containing all other users (not permissioned)
2. Assigning users to one of these groups or updating groups can be done with a nightly job. *vwd* can provide a custom *webservice* to receive the information if a vwd id is permissioned or not for the use of *vwd data analytics XL*.
3. During the login process you need to execute one of the following lines depending on the permission:
 - a. `adxregistrator.exe /install="MarketManager.Ui.Addin.dll" /privileges=user` for permissioned users
 - b. `adxregistrator.exe /uninstall="MarketManager.Ui.Addin.dll" /privileges=user` for not permissioned users

The adxregistrator.exe is in the installation folder of the addin.

After execution the addin bar and vwd-UDF-functions are available or not in Excel.

A customized login.xml file with user and password needs to be created in the user-specific files folder (AppData folder) during the login process if it not already exists there.

4.2. Alternative way without GPOs

If you do not want to create special GPOs for activating and deactivating *vwd data analytics XL* you can contact a custom *vwd* provided *webservice* with the vwd id for the user that is logging in onto the machine. Depending on the result you have to execute

- a) **For permissioned users**
`adxregistrator.exe /install="MarketManager.Ui.Addin.dll" /privileges=user` for permissioned users
- b) **For not permissioned users**



adxregistrator.exe /uninstall="MarketManager.Ui.Addin.dll" /privileges=user for not permissioned users

After activating *vwd data analytics XL* a customized login.xml file with user and password needs to be created in the user-specific files folder (AppData folder) during the login process if it not already exists there.

5. Contact

vwd GmbH
Mainzer Landstraße 178-190
60327 Frankfurt
Deutschland

Customer Service

service@vwd.com
+49 69 26095760

© Copyright 2019 vwd Vereinigte Wirtschaftsdienste GmbH

All rights reserved. No part of this work may be reproduced, processed or distributed in any form without the written permission of vwd Vereinigte Wirtschaftsdienste GmbH. The information contained herein is strictly confidential and is the property of vwd Vereinigte Wirtschaftsdienste GmbH, Frankfurt am Main.