

vwd market manager Installation Guide

28/04/2020

Index

1. Introduction	3
2. System Requirements	3
2.1. Hardware	3
2.2. Software	3
2.3. Network.....	3
2.3.1. Firewalls.....	3
2.3.2. Proxy Servers	4
3. Installation Scenarios	4
3.1. Desktop	5
3.2. Desktop - Manual Update	6
3.3. Terminal Server.....	7
4. Data Connection Scenarios.....	9
4.1. Internet	9
4.2. Leased Line	10
5. Client Proxy Configuration.....	10

1. Introduction

The default distribution scenario of the vwd market manager is a local installation on a personal computer. This type of installation is kept up to date by an automatic update feature that is run on each application start. In general, the vwd market manager can also be run in a terminal server environment. Because of the multitude of terminal server scenarios, we strongly suggest to evaluate the scenario of your choice as extensively as possible. Make sure to include any hardware, virtualization and software involved in the planned scenario in the evaluation process.

This document describes the different installation scenarios and provides all information required to install the vwd market manager client application.

2. System Requirements

2.1. Hardware

Minimum hardware recommendations for the vwd market manager client application are listed below. Scale terminal server hardware depending on expected number of users.

2.5 GHz dual core processor
2 GB RAM
0.5 GB disc space
1280x1024 pixel display

2.2. Software

Microsoft Windows Vista or higher (Desktop)
Microsoft Windows Server 2008 R2 or higher (Terminal Server)
Microsoft .NET Framework 4.6.2
Microsoft Internet Explorer 9 or higher
Adobe (Acrobat) Reader 10 or higher (or equivalent IE Plugin)

vwd market manager 4.0 or higher

2.3. Network

A network connection to the vwd data centers is required. Depending on the data connection scenario of your choice Internet connectivity, leased line connectivity or both are required (s.4).

2.3.1. Firewalls

All firewalls between vwd market manager clients and vwd data centers are required to allow TCP communication on ports 80 and 443 with all the addresses listed below. Please note that port 443 may be used for none SSL communication.

For customers located in **Europe** (without Italy):

update.vwd.de
vp00.vwd.de
vp01.vwd.de
prospectus.vwd.com
<https://solutions.vwdservices.com>
<https://permsys.vwd.com> (current IPs are 128.127.8.95 and 213.61.9.109)
<https://mdd.vwd.com> (current IPs are 213.61.9.82 and 128.127.8.92)

inet1-msc01.vwd.com -> 128.127.9.65
inet1-msc02.vwd.com -> 128.127.9.84

inet1-msc03.vwd.com -> 128.127.9.87
inet1-msc04.vwd.com -> 128.127.9.88
inet1-msc05.vwd.com -> 128.127.9.89
inet1-msc06.vwd.com -> 128.127.9.71
inet1-msc07.vwd.com -> 128.127.9.91
inet1-msc08.vwd.com -> 128.127.9.72
inet1-msc09.vwd.com -> 128.127.9.73
inet1-msc10.vwd.com -> 128.127.9.66
inet2-msc01.vwd.com -> 128.127.8.18
inet2-msc02.vwd.com -> 128.127.8.19
inet2-msc03.vwd.com -> 128.127.8.20
inet2-msc04.vwd.com -> 128.127.8.21
inet2-msc05.vwd.com -> 128.127.8.22
inet2-msc06.vwd.com -> 128.127.8.23
inet2-msc07.vwd.com -> 128.127.8.24
inet2-msc08.vwd.com -> 128.127.8.25
inet2-msc09.vwd.com -> 128.127.8.26
inet2-msc10.vwd.com -> 128.127.8.27

For customers located in **Italy**:

update.vwd-italia.com
red1.vwd-italia.com
red2.vwd-italia.com
prospectus.vwd.com
<https://solutions.vwdservices.com>
<https://permsys.vwd.com> (current IPs are 128.127.8.95 and 213.61.9.109)
<https://mdd.vwd.com> (current IPs are 213.61.9.82 and 128.127.8.92)

128.127.8.147 and 128.127.8.148
128.127.8.151 and 128.127.8.152

2.3.2. Proxy Servers

All proxy servers involved in the communication between vwd market manager clients and vwd data centers are required to support HTTP 1.1 (GET and POST). See chapter 5 for information about how to configure proxy server settings in the vwd market manager client.

3. Installation Scenarios

All installation scenarios can be differentiated by three features:

- **Application type: Desktop or Terminal Server**
The client application can be executed on a personal computer or be hosted on a Terminal Server (including Citrix).
- **Data connection: Public MSCs**
The client application can be connected to publicly available MSCs in the vwd data centers.
- **Application update mode: Automatic or Manual**
The client application executed on a personal computer can be configured to be updated automatically. In all other scenarios the application is updated manually by local administration on customer site.

Figure 3-1 shows all installation scenario features. Depending on the feature selection six scenarios can be differentiated:

- Desktop
- Desktop - Manual Update
- Terminal Server

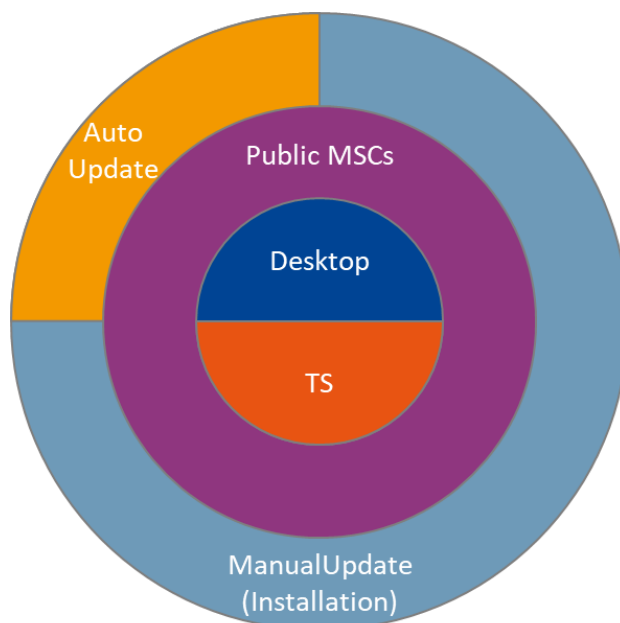


Figure 3-1: All installation scenario features.

3.1. Desktop

The 'Desktop' installation scenario is the default scenario for all users running the vwd market manager on a personal computer. Figure 3-2 shows the features that define this installation scenario.

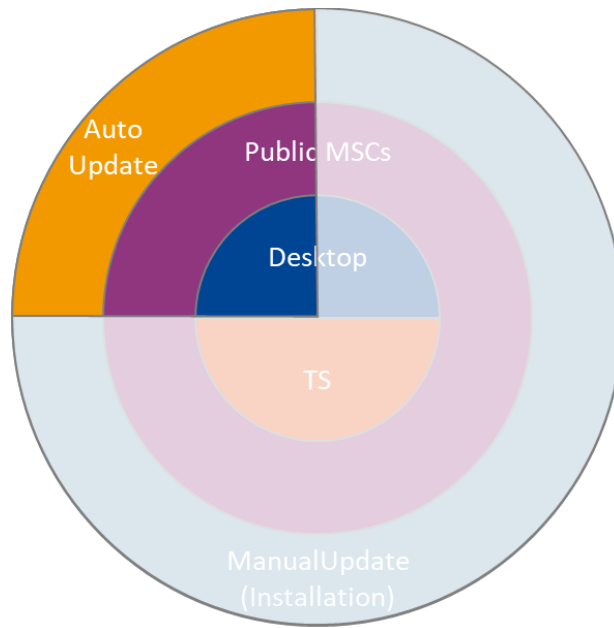


Figure 3-2: Installation scenario 'Desktop' features.

In this scenario a downloader is used to initially download the client application and to keep it up to date. The file to be executed is 'MarketManager.exe'. Usually the customer receives information on how to get the files and credentials required by email. If this information is missing, please contact your local vwd customer service.

3.2. Desktop - Manual Update

The 'Desktop – Manual Update' installation scenario is a special scenario for users running the vwd market manager on a personal computer. In this scenario the client is not updated automatically and is connected to default MSCs. Figure 3-3 shows the features that define this installation scenario.

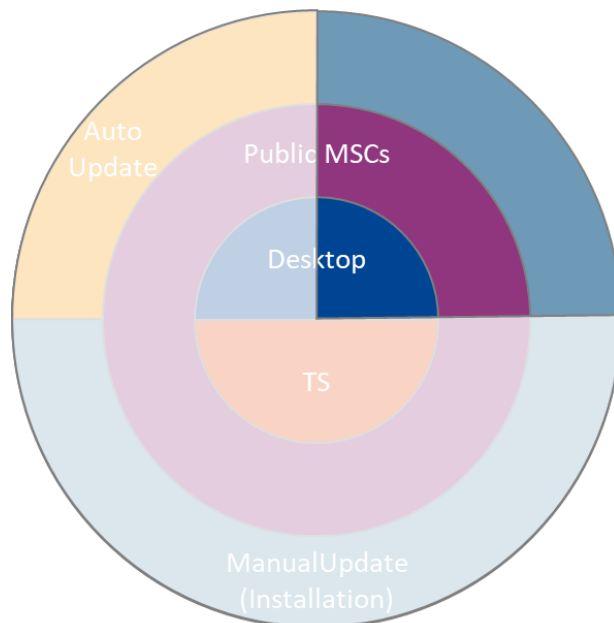


Figure 3-3: Installation scenario 'Desktop – Manual Update' features.

The installation packages described here are available on the application update servers. Please contact your local vwd customer service for download details and credentials.

The installation archive contains three folders mentioned later on:

- **Application**
Application files (shared for all users).
- **User**
User specific files.
- **Config**
Configuration files matching the application files.

All files needed for the application part of the installation are found in the 'Application' folder in the archive. The executable to start the vwd market manager client is '**MarketManagerApp.exe**'.

Because the archive does contain all files required no application files from existing older versions are needed. We recommend installing the application part into an empty folder.

A desktop version consists of these subfolders and files from the 'Application', 'User' and the 'Config' folder in the archive:

All files	from the 'Application' folder
AppConfig	from the 'Config' folder
Properties	from the 'User' folder
Temp	from the 'User' folder
WorksheetLayout	from the 'User' folder
MSApi.xml	from the 'User' folder

By default, the application runs an automatic configuration update at every startup. The configuration is stored in the user part. This feature depends on the file '**UpdateConfiguration.xml**' that contains information about the application version. If the automatic configuration update should be disabled, the content of the file from the archive has to be modified. In order to do so replace the current mandator (something like 'VWD V4 D 4.x.y.z') with 'VWD DEFAULT' as shown below. Please note that any other mandator value than the one mentioned here may cause problems in the vwd market manager client at runtime.

```
<?xml version="1.0" encoding="utf-8" ?>
<Config xmlns="http://tempuri.org/UpdateConfiguration.xsd">
  <Url>CONFIG_SERVICE</Url>
  <Mandator>VWD DEFAULT</Mandator>
</Config>
```

3.3. Terminal Server

The 'Terminal Server' installation scenario is a special scenario for hosting the vwd market manager client on a terminal server farm. The client is connected to default MSCs in the vwd data centers. Figure 3-4 shows the features that define this installation scenario.

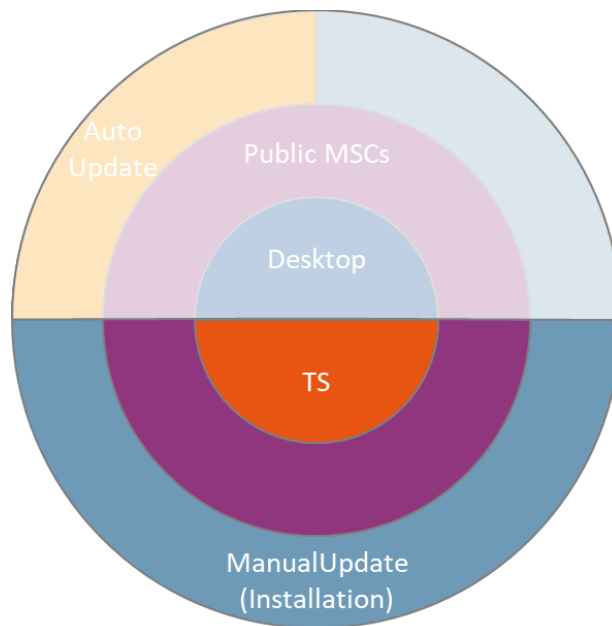


Figure 3-4: Installation scenario 'Terminal Server' features.

Specific installation packages for terminal server installations described here are available on the application update servers. Please contact your local vwd customer service for download details and credentials.

The installation archive contains three folders mentioned later on:

- **Application**
Application files (shared for all users).
- **User**
User specific files.
- **Config**
Configuration files matching the application files.

All files needed for the application part of the installation are found in the 'Application' folder in the archive. The executable to start the vwd market manager client is '**MarketManagerApp.exe**'.

Because the archive does contain all files required no application files from existing older versions are needed. We recommend installing the application part into an empty folder.

In order to give the application access to the corresponding user folder the file '**TerminalConfig.xml**' (included in the application part) has to be modified. Replace the path highlighted below with the correct path pointing to the user data according to your installation environment.

```
<?xml version="1.0" encoding="utf-8" ?>
<Config>
  <BASE_DIR>J:\Data\MarketManager</BASE_DIR>
  <DisablePathAdjustment>>false</DisablePathAdjustment>
</Config>
```

By default, the application runs an automatic configuration update at every startup. The configuration is stored in the user part. This feature depends on the file '**UpdateConfiguration.xml**' that contains information about the application version. If the automatic configuration update should be disabled, the content of the file from the archive has to be modified. In order to do so replace the current mandator (something like 'VWD V4 D 4.x.y.z') with

'VWD DEFAULT' as shown below. Please note that any other mandator value than the one mentioned here may cause problems in the vwd market manager client at runtime.

```
<?xml version="1.0" encoding="utf-8" ?>
<Config xmlns="http://tempuri.org/UpdateConfiguration.xsd">
  <Url>CONFIG_SERVICE</Url>
  <Mandator>VWD DEFAULT</Mandator>
</Config>
```

The user part of the installation consists of all the files from the 'User' and the 'Config' folder in the archive. To avoid loss of user data, make sure to apply the proper workflow for creating new user parts or updating existing user parts.

A newly created user part consists of these subfolders and files from the 'User' and the 'Config' folder in the archive:

AppConfig	from the 'Config' folder
Properties	from the 'User' folder
Temp	from the 'User' folder
WorksheetLayout	from the 'User' folder
MSApi.xml	from the 'User' folder
Login.xml	created with user specific credentials

A custom file named '**Login.xml**' has to be created for every user containing his data connection credentials (user name and password) prior to the first application start. The file has to be located in the user part of the installation and can be created as text file from this template:

```
<?xml version="1.0" standalone="yes"?>
<Login xmlns="http://tempuri.org/login.xsd">
  <LOGIN>
    <UserName>Enter user name (vwd id) here</UserName>
    <Password>Enter password here</Password>
    <ShowNextTime>>false</ShowNextTime>
    <Translated>>false</Translated>
  </LOGIN>
</Login>
```

If the 'Login.xml' is missing or contains invalid credentials, the application will fail to startup. User credentials cannot be entered or modified by the user in this installation mode.

If a user part exists, all subfolders and files in the existing user part are left unchanged despite the subfolder 'AppConfig'.

- Delete the complete subfolder 'AppConfig' from the existing user data.
- Copy the content ('AppConfig') of the 'Config' folder in the archive into the existing user data.

4. Data Connection Scenarios

Without further modification all data traffic between the vwd market manager client and the vwd data centers uses Internet connectivity. In all installation scenarios listed in chapter 3 the configuration can be modified in order to use a leased line between the local network and the vwd data centers.

4.1. Internet

By default, the vwd market manager client is configured to use an existing Internet connectivity to connect to vwd data centers. In this scenario no further customization is required.

4.2. Leased Line

Customizations required to connect vwd market manager clients to the vwd data centers using a leased line are described here.

Please contact vwd for the IP addresses. The IP addresses are individual and have to be coordinated and enabled (firewall / routing).

You must ensure, that in your network the following names are resolved to IP addresses:

For customers located in **Europe** (without Italy):

- vp00.vwd.de
- vp01.vwd.de

For customers located in **Italy**:

- red1.vwd-italia.com
- red2.vwd-italia.com

Additionally, the following names have to be resolved for customers in **Europe** and **Italy**:

- prospectus.vwd.com
- solutions.vwdservices.com
- permsys.vwd.com
- mdd.vwd.com

This can be done with a DNS server in your network or a local host file on each machine.

5. Client Proxy Configuration

The vwd market manager client can be configured to use a proxy server in order to connect to the vwd data centers. Depending on the installation scenario the configuration is edited in the first dialog of the downloader (**MarketManager.exe**) or in the dialog 'Settings' of the client application itself (**MarketManagerApp.exe**). The latter one is available by the Menu 'Options\Settings...'.

The input forms used for proxy configuration and test are shown in Figure 5-1 to Figure 5-4. A proxy server can be defined directly, by a proxy script or by the IE settings (system proxy). Available authentication options are: Basic, NTLM and current login.

In case a specific user agent information ('browser') not available in the predefined list is required by your network infrastructure, please contact your local vwd customer service.

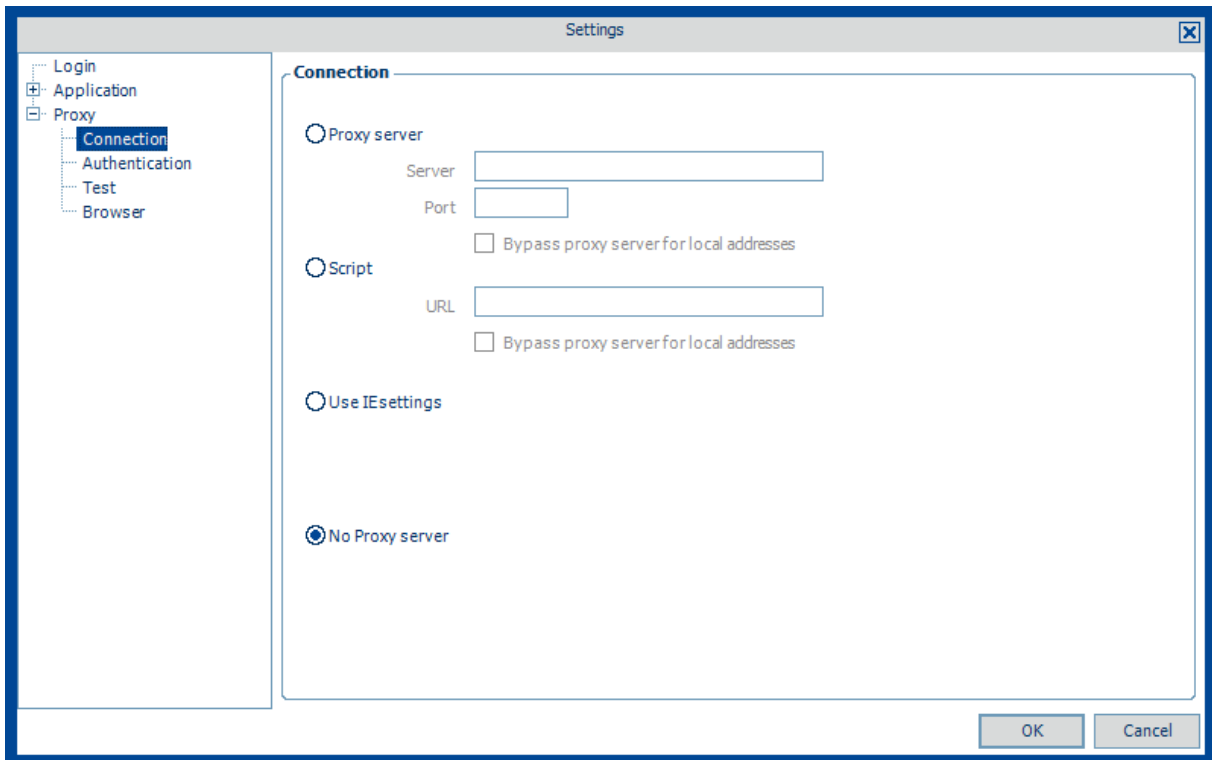


Figure 5-1: Dialog 'Settings', node 'Proxy'Connection'

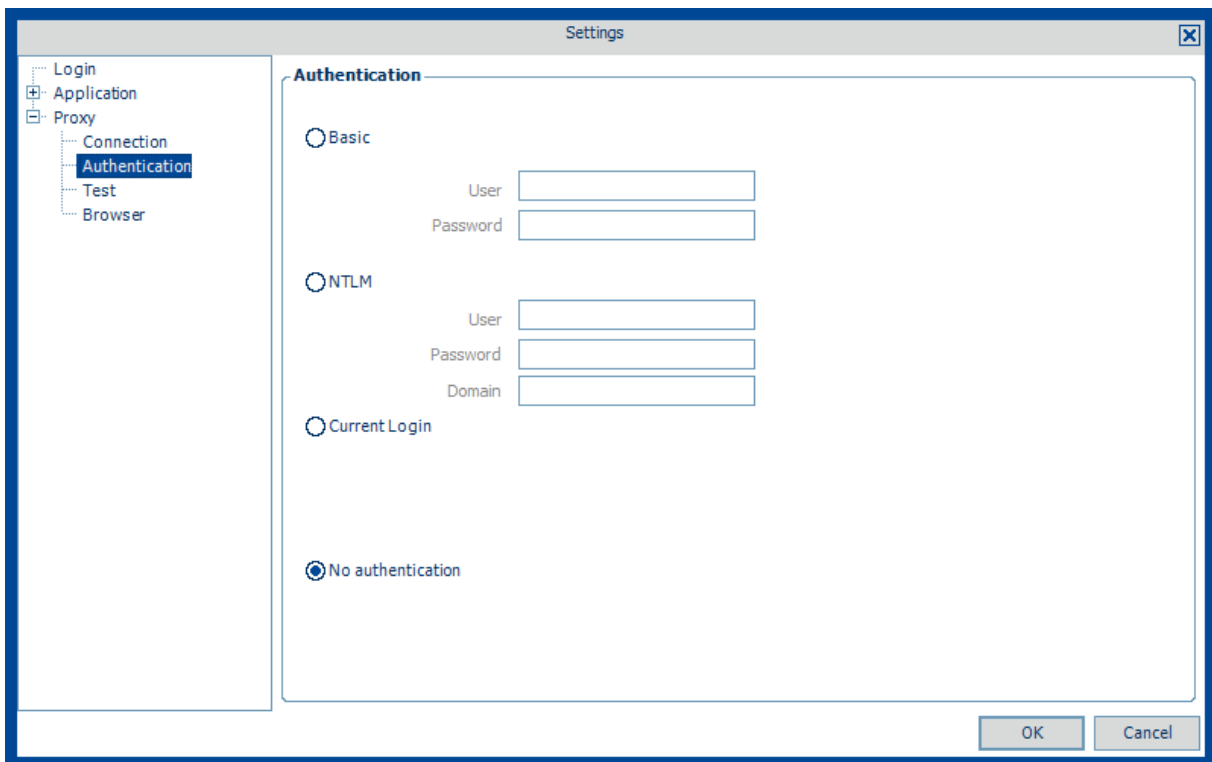


Figure 5-2: Dialog 'Settings', node 'Proxy'Authentication'

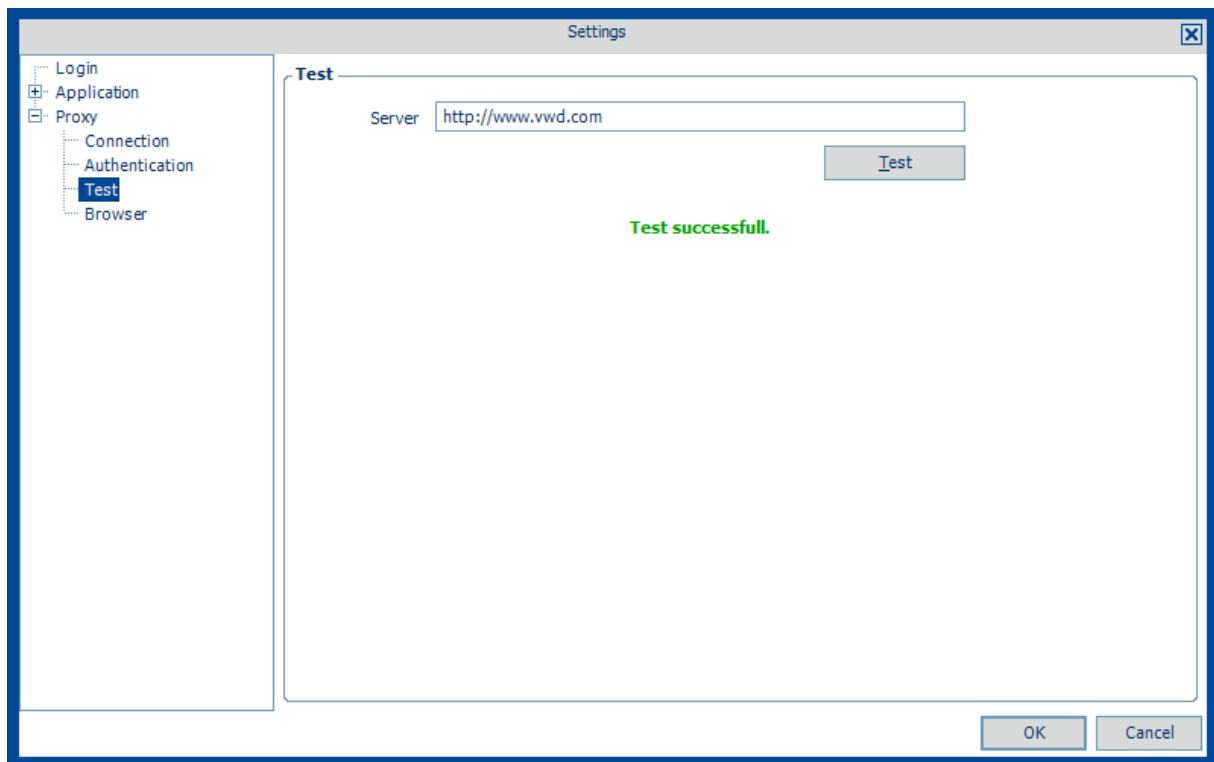


Figure 5-3: Dialog 'Settings', node 'Proxy\Test'

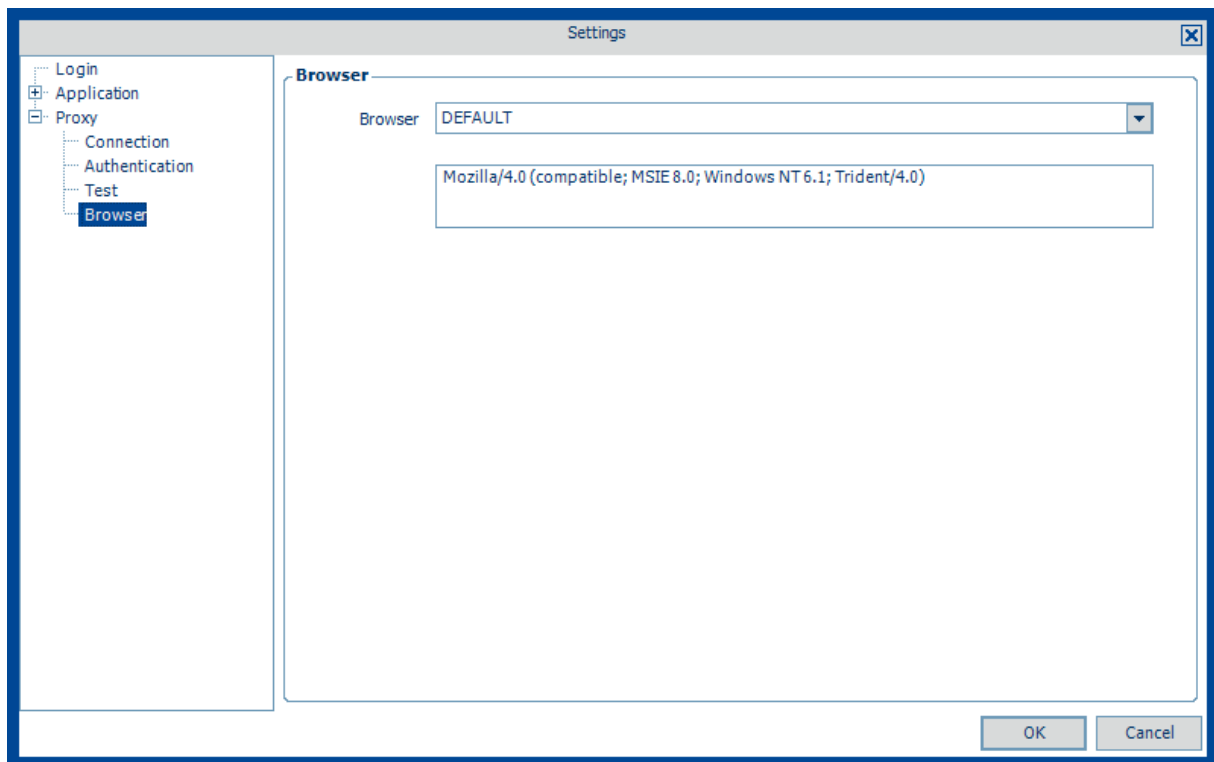


Figure 5-4: Dialog 'Settings', node 'Proxy\Browser'

© Copyright 2020 Infront Financial Technology GmbH

All rights reserved. No part of this work may be reproduced, processed or distributed in any form without the written permission of Infront Financial Technology GmbH. The information contained herein is strictly confidential and is the property of Infront Financial Technology GmbH, Frankfurt am Main.

vwd has become Infront. We will continue to provide you with the smart products and expert service you have come to expect from vwd, but the brand name vwd has been replaced by Infront.

Infront Financial Technology GmbH
Mainzer Landstraße 178 – 190 | 60327 Frankfurt am Main

Page 13
28/04/2020